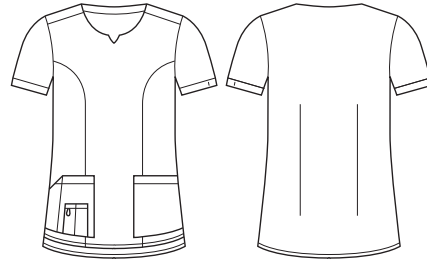


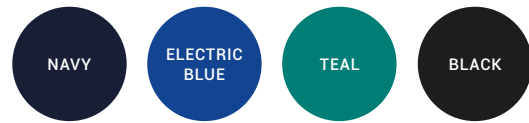


WOMENS ROUND NECK TAILORED FIT SCRUB TOP

CST942LS



COLOURS



GARMENT MEASUREMENTS

SIZE	XXS	XS	S	M	L	XL	2XL	3XL
½ CHEST* (CM)	42.5	46	49.5	53	56.5	60	63.5	67

½ CHEST MEASURED 2.5CM BELOW UNDERARM

STYLE F&B

- 5 pockets, no chest pocket
- All stress points bar-tacked
- Utility loops in self fabric in RHS pocket
- Bungee loop for swipe card/keys
- Tailored fit with princess seams to provide shaping from bust to waist
- Back darts also provide shaping
- Go up one size if in-between sizing
- Functional side splits to allow easy access into pant pockets and for movement
- Curved front and back hem with longer back hem designed to sit just below the bottom
- Modest neck-line
- No woven neck labels – avoiding irritation

FABRIC COMPOSITION

- 96% Polyester 4% Elastane, with antistatic finish and wicking finish
- Easy-care, wash and wear performance fabric for the most demanding of environments
- Suitable for warmer climates
- Excellent Fade Resistance means 'blacks stay black' and colours stay vibrant for longer
- Soft against the skin - camisoles/t-shirts underneath is not required

CARE DETAILS

- Machine wash cold with like colours, inside out - to hold vibrancy of colours. Do not bleach, hang to dry away from sunlight, do not tumble dry. Cool iron if required, dry cleanable. Quick drying - drip dry on hanger for iron-free drying.

MATCH WITH

- Wear with its matching scrub lowers available in slim leg and straight leg styles
- Can be worn with functional lowers - as an alternative tunic style top
- Match with V-neck easy fit scrub top CST941LS

